

GPIO, Ping, & SNMP Connectivity

GPX Pro™ Series

The **GPX Pro™** Series features on-board processing and SLS WebControls for cost-effective buy-it-once solutions that keep you in control for decades to come.



GPX-32 Pro is a 1RU unit featuring 32 Status, 32 Analog and 32 Relays, when paired with the PDP-32 Punchdown Panel*



GPX-8 Pro features 8 Status, 8 Analog and 8 Relays, all housed in a 1/2 rack 1RU case

GPX Pro Series

- Huge flexibility, tiny footprints
- Software-driven designs safely and securely leverage the power of IoT, using gear you already own
- Straight forward device pinging across the network
- Alarm/Event notification via SNMP traps, email and RESTful API
- Full SNMP management capabilities

Scalable, Site Monitoring Solutions

SuiteLife Systems designed the **GPX Pro** Series to be a flexible monitoring and control device, economically viable as a complete solution for individual stations and remote sites, or as part of a wide scale Network Monitoring System. Embedded software allows full SNMP management capabilities, device pinging, and alarm/event notification, all within a 1RU footprint.

Both the **GPX-32 Pro** and **GPX-8 Pro** models are powered by **SLS WebControls** software, our powerful remote monitoring interface, providing you with incredible depth of detail, and programming flexibility. Which model you choose will be determined by the number of devices you wish to monitor, their connectivity requirements, and how you wish to interact with them.

GPX Pro models are fully functional as a standalone site management tools, but multiple units can also be securely networked via the new **SLS CloudControls**. All units are also fully backward-compatible to earlier systems, and can easily be deployed as part of a SuiteLife Systems **Axess** or **Axess NOC** monitoring platform.

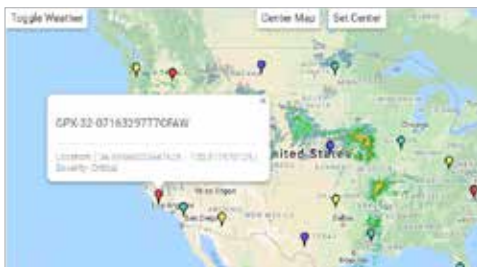
All **GPX Pro** models are backed by 20+ years of industry-leading broadcast monitoring experience and dependability. Our software-based solutions safely and securely leverage the power of IoT, interfacing with gear you already own. We provide buy-it-once solutions that keep you in control for decades to come.

The gear you have. The control you want. The security you need.



A Division of NFB Consulting LLC
2501 East 28th Street, Suite 111
Signal Hill, CA 90755
t 310.405.0839 f 310.405.0838
www.suitelifesystems.com
© 2020 NFB Consulting LLC

SLS WebControls



Manage.

- Sophisticated software embedded in each model
- Includes a complete management toolset for device interfacing, notifications & alarms, and multiple user-level interrogation schemes
- Securely provides incredible depth of detail, with programming flexibility

Monitor.

- Provides accurate and comprehensive data metering, allowing complete remote site performance monitoring of just the data you want
- The web-based user interface ensures secure remote site connection to any screen, anywhere, any time
- Multiple systems can be linked via the cloud, providing an affordable and scalable NOC approach, allowing adjustment to the number of devices and sites as requirements shift

Control.

- Interfaces via SNMP, Serial, TCP/IP and GP I/O enable full control of most devices, allowing a large variety of functional requirements
- Adding full SNMP functionality increases efficiency via Data Point Independence, allowing you to selectively connect to only your desired datapoints
- Automate failovers with SCL macros, and monitoring by exceptions protocols, formerly only available with a full Axxess license
- SLS WebControls detailed data management allows the preemptive management of on-air failures



*PDP-32 Punch Down Panel

The **PDP-32 Punch Down Panel** is used to facilitate connection of passive peripheral equipment to the **GPX-32 Pro**. The unit is comprised of 4 cables (2 x SCSI 50pin, and 2 x SCSI 68pin) which connect between the **GPX-32 Pro** and the wiring interface. The **PDP-32 Punch Down Panel** has PCB-mounted 110 blocks, SCSI connectors, and jumpers, all mounted on a 2RU metal frame for easy mounting in a standard 19" EIA rack.



Front and rear view **PDP-32 Punch Down Panel**