

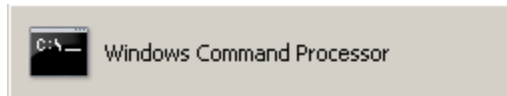
# Windows 7 Professional Pre- Axess Configuration

## Prerequisites

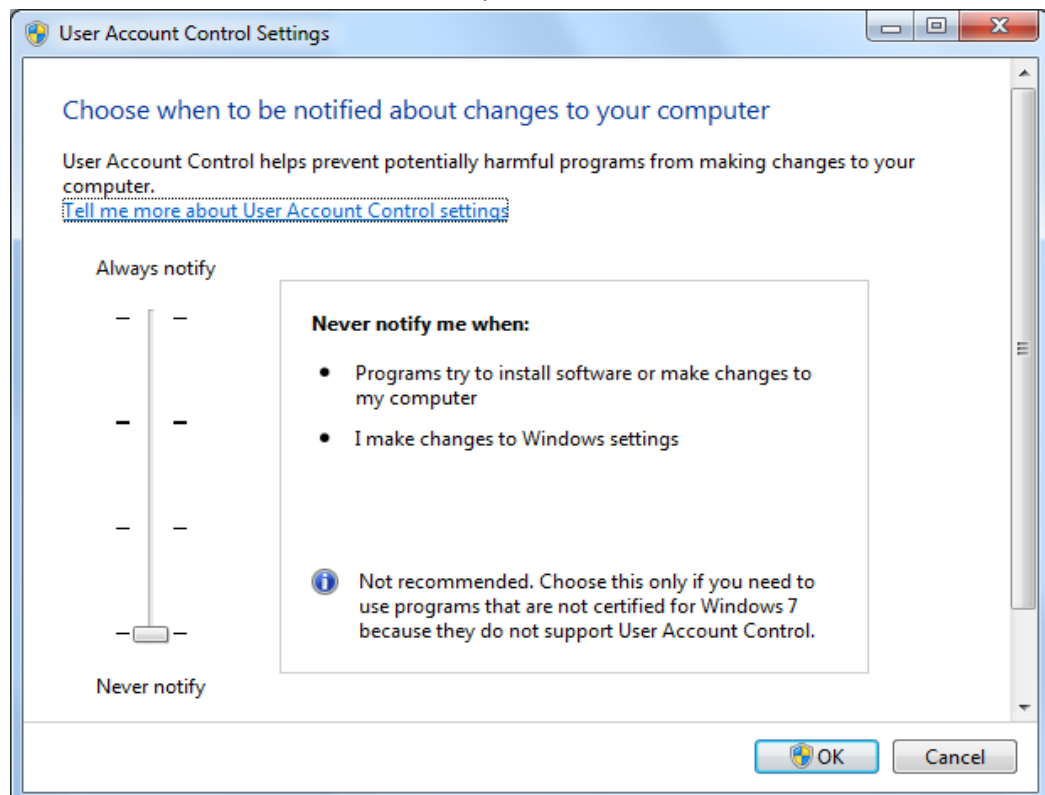
- Install all required drivers (Network, Chipset, System Management, VGA)
- Install all Critical Windows Updates
- Install latest Adobe reader <http://www.adobe.com/>
- Install UltraVNC <http://www.uvnc.com/download.html> (for remote diagnostics)
- Install WinRar <http://winrar2008.org> (common data compression tool)

Follow ALL system configuration items outlined in this document

- Import Command Prompt CMD.exe to start menu
  - Click on the start button
  - In the search bar directly above the Start button type in CMD
  - When you see the icon, right click it and select Pin to Start Menu



- Disable User Account Control (UAC)
  - Control Panel \ User Accounts \ User Accounts \ Change User Accounts Control settings
  - Move the slider bar down to Never notify and click OK.



- Configure Static IP for TCP/IPv4 (Obtainable from Network Administrator)
  - Control Panel\Network and Internet \ Network and Sharing Center\ Change adapter settings
    - Right Click Local Area Connections and click Properties
    - Select Internet Protocol Version 4 and click properties

The screenshot shows the 'Internet Protocol Version 4 (TCP/IPv4) Properties' dialog box. The 'General' tab is selected, and the 'Alternate Configuration' sub-tab is also visible. The dialog contains instructions about automatic IP assignment and options to use static IP or DNS settings. The 'Obtain an IP address automatically' and 'Obtain DNS server address automatically' options are selected. There are input fields for static IP, subnet mask, default gateway, preferred DNS, and alternate DNS. A 'Validate settings upon exit' checkbox and an 'Advanced...' button are at the bottom. 'OK' and 'Cancel' buttons are at the very bottom.

Internet Protocol Version 4 (TCP/IPv4) Properties

General Alternate Configuration

You can get IP settings assigned automatically if your network supports this capability. Otherwise, you need to ask your network administrator for the appropriate IP settings.

☒ Obtain an IP address automatically

☐ Use the following IP address:

IP address:

Subnet mask:

Default gateway:

☒ Obtain DNS server address automatically

☐ Use the following DNS server addresses:

Preferred DNS server:

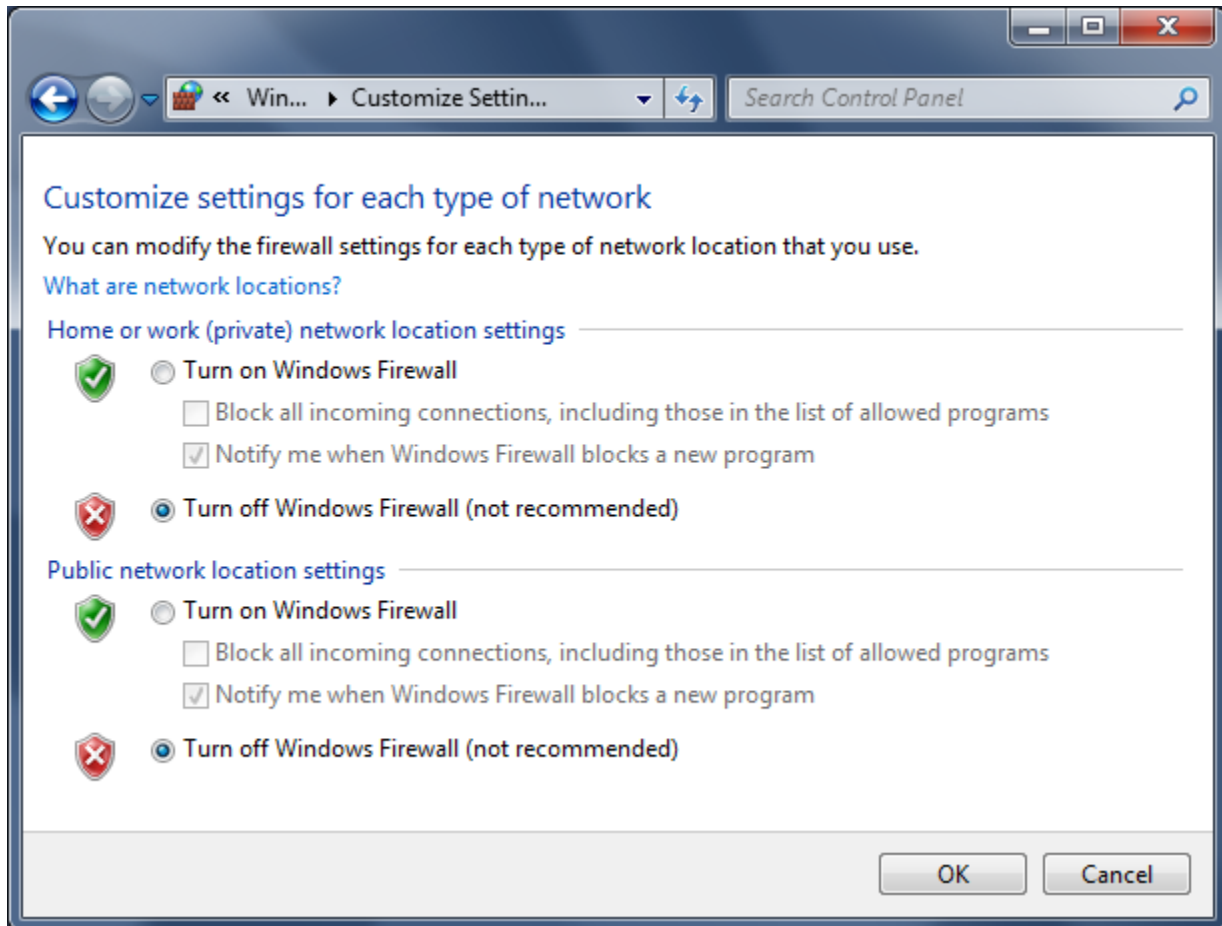
Alternate DNS server:

☐ Validate settings upon exit

Advanced...

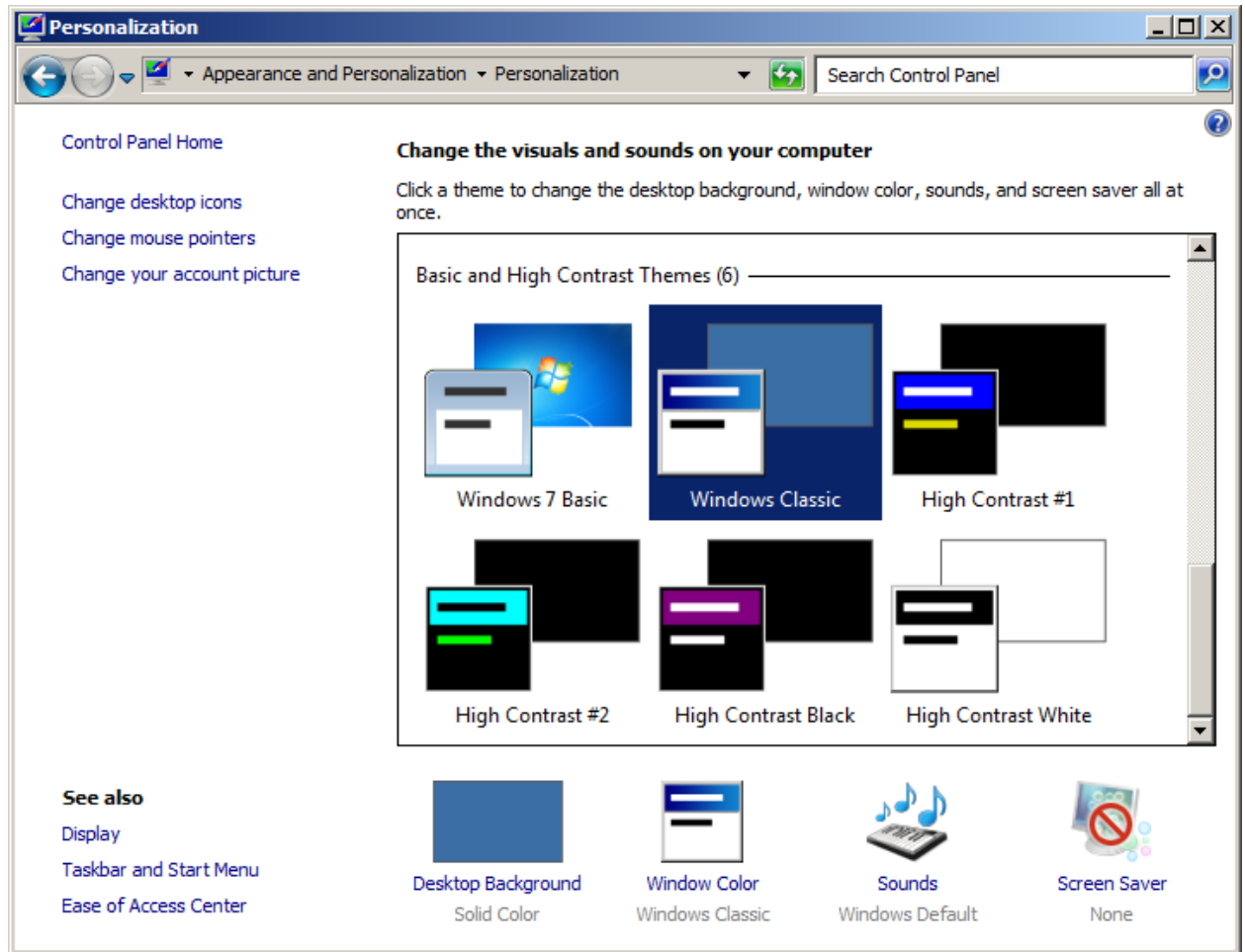
OK Cancel

- Disable Windows Firewall
  - Control Panel \ System and Security \ Windows Firewall \ Turn Windows Firewall on or off\



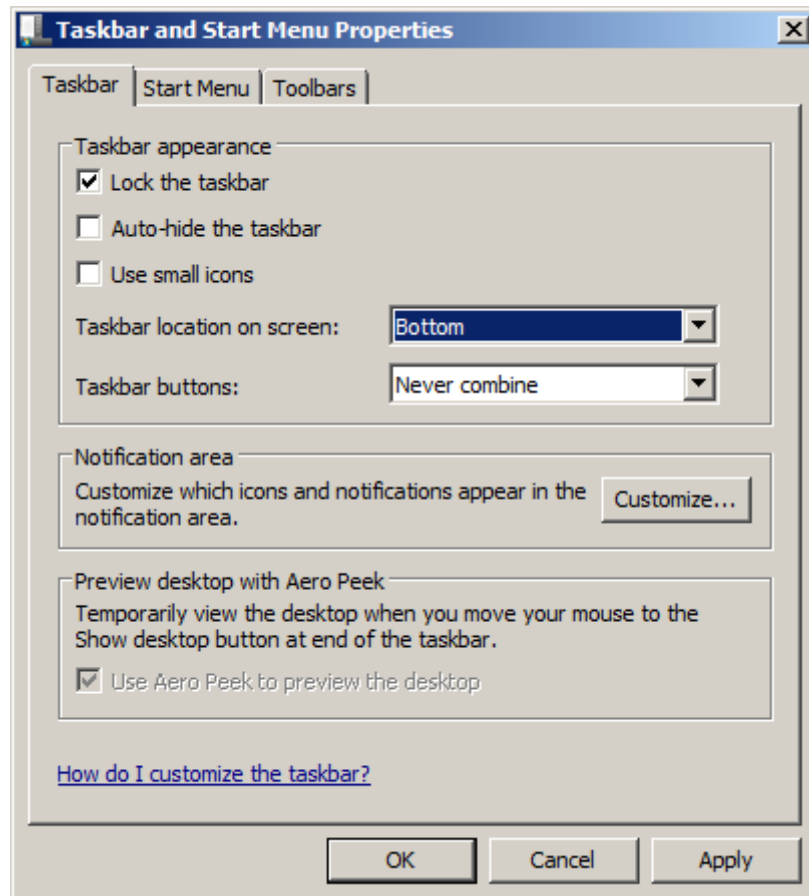
Prepping Windows for improved performance..

- Switch theme to “Windows Classic” and set Statmon desktop image.
  - Control Panel \ Appearance and Personalization \ Personalization
  - Select Windows Classic under “Basic and High Contrast Themes”

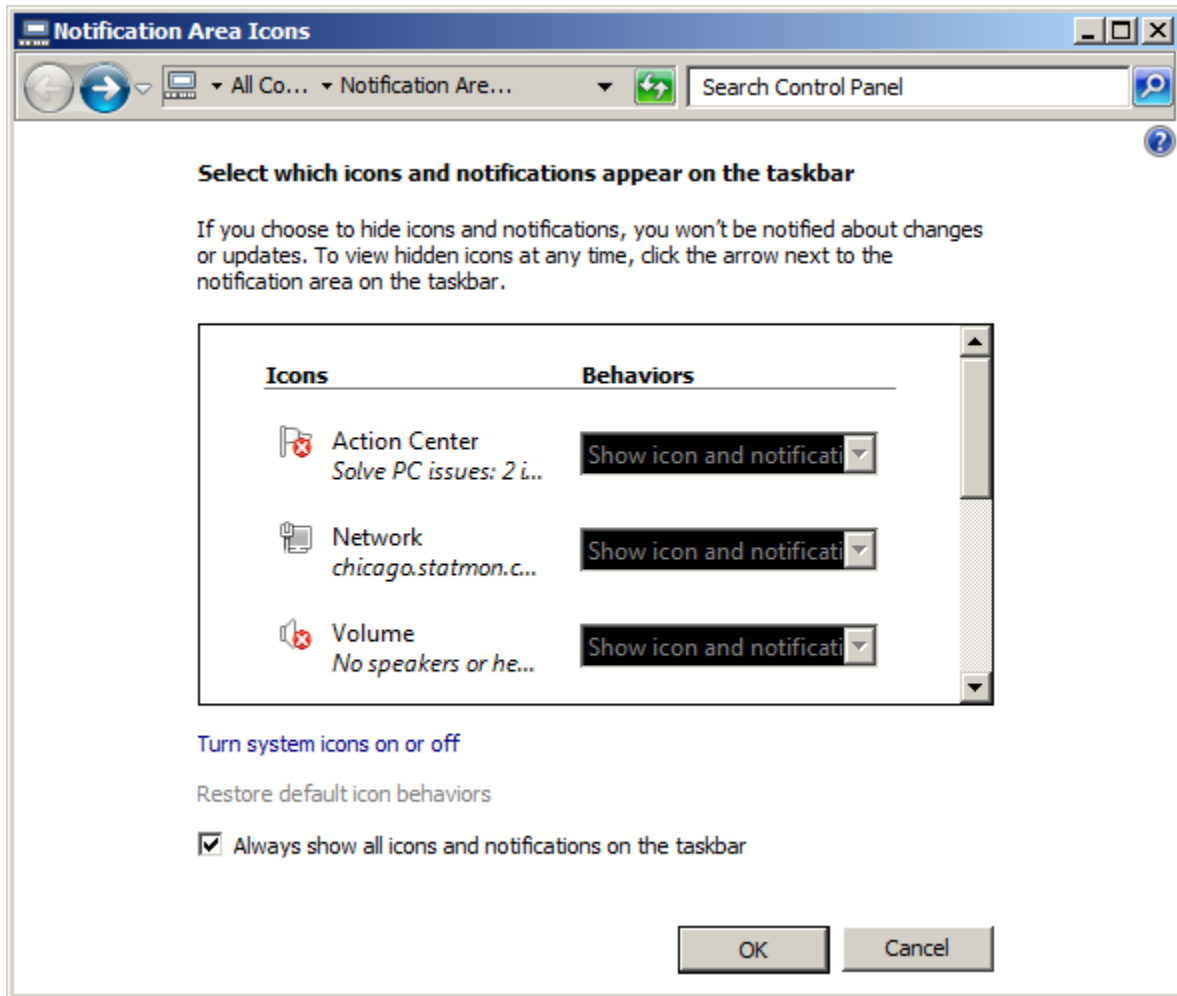


- THIS STEP IS NOT MANDATORY (only for Statmon Support setup)
  - Copy the Statmon Desktop background logo into the 'My Pictures' folder. (s-bkgrd-blue.jpg is located on [\\chi-sr-boff03\\software](http://chi-sr-boff03/software) )
  - Select the Desktop Background and on the next window, Browse to your 'My Pictures' folder.
  - Select the Statmon desktop logo called 's-bkgrd-blue.jpg' and save your changes.

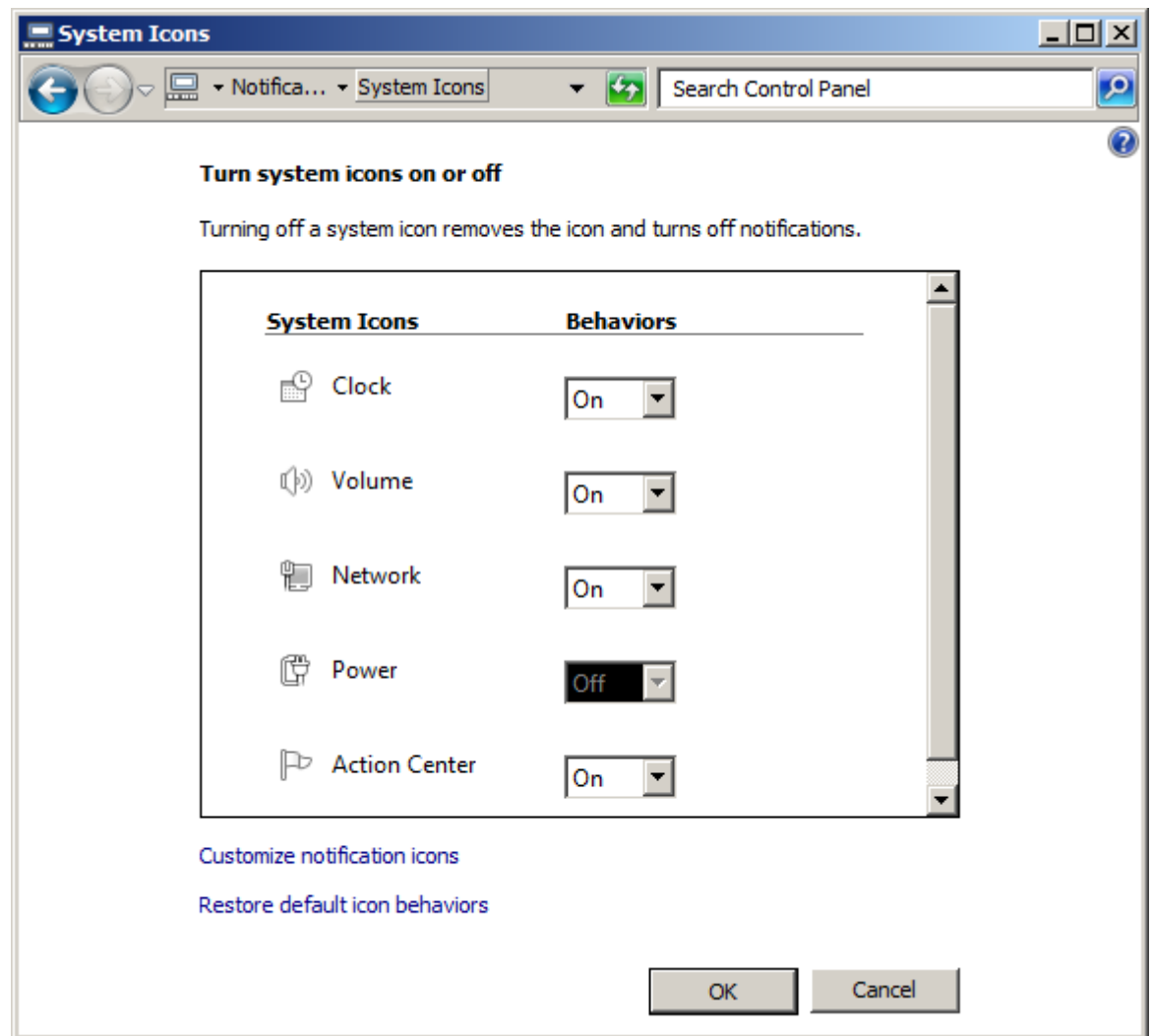
- Right click Start button and select Properties
  - Select Lock the taskbar
  - Next to Taskbar buttons select Never combine from the pull down menu.



- In the 'Notification area' section select Customize.....

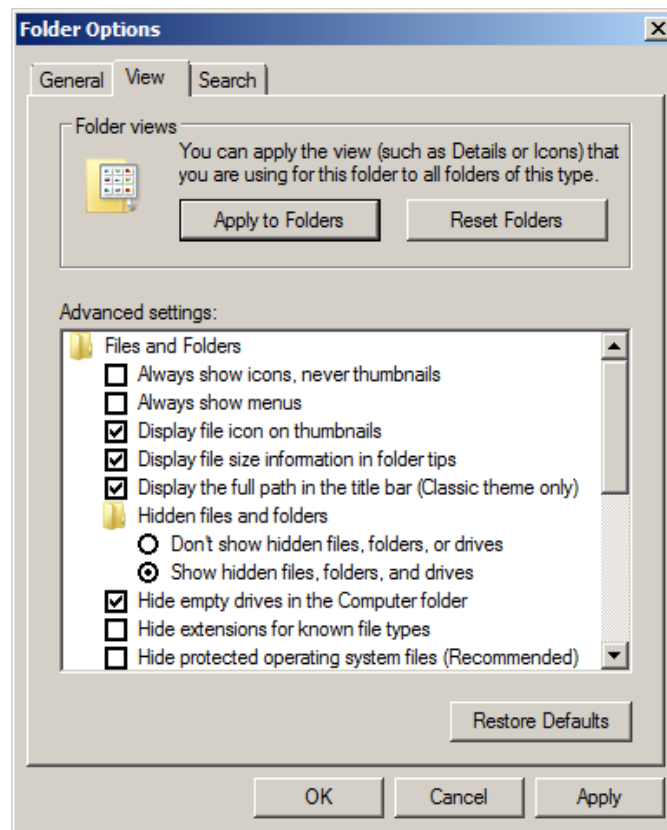


- Select the check box 'Always show all icons and notifications on the taskbar'
- Above the check box click on 'Turn system icons on or off'



- Set all System Icons to ON with the exception of Power which is for a laptop.
- Click OK to exit and save settings.

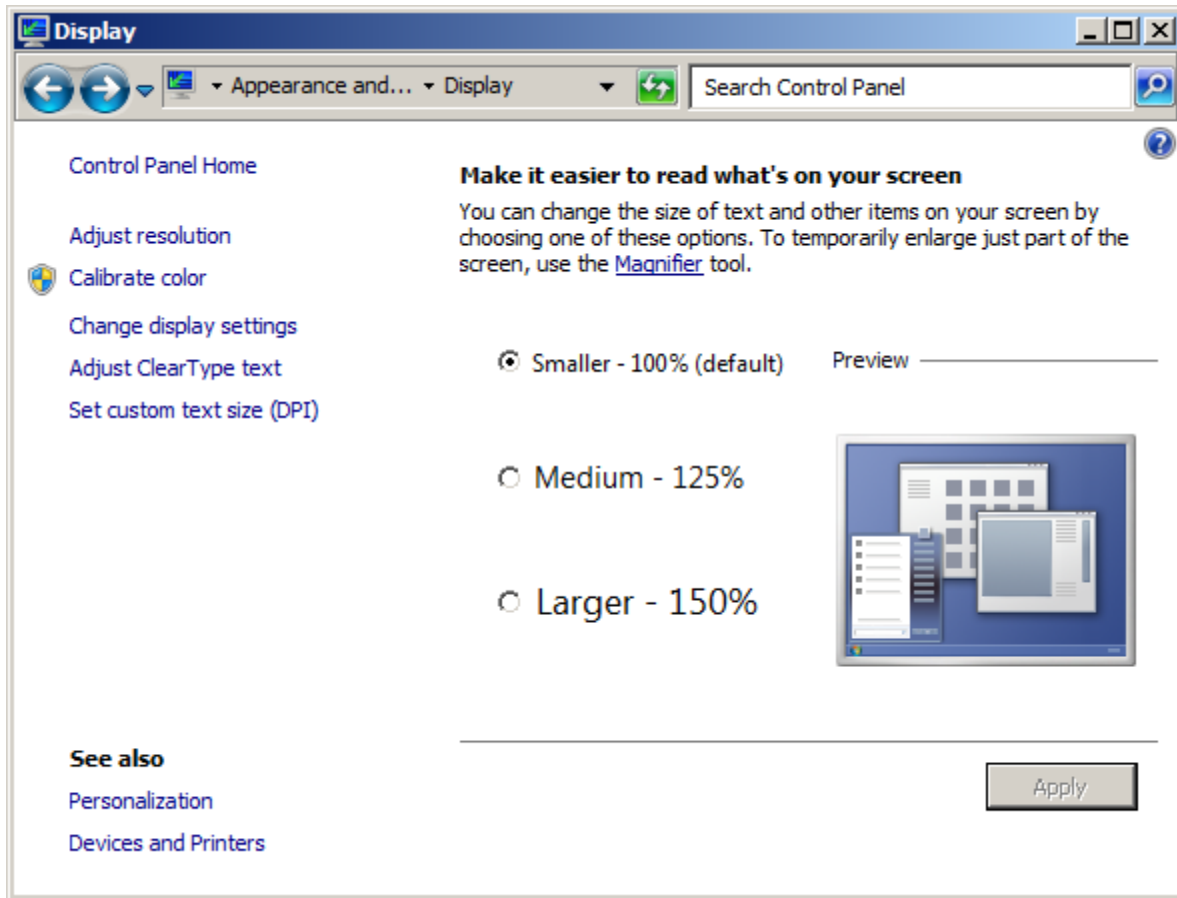
- Right click Start button, select Open Windows Explorer, and then navigate to Organize \ Folder and search options
- Select
  - Display full path in title bar (Classic Theme only)
  - Show hidden files, folders, and drives
- De-Select
  - Hide extension for known file types
  - Hide protected operating system files
  - Use sharing wizard
- Click Apply and then Apply to Folders



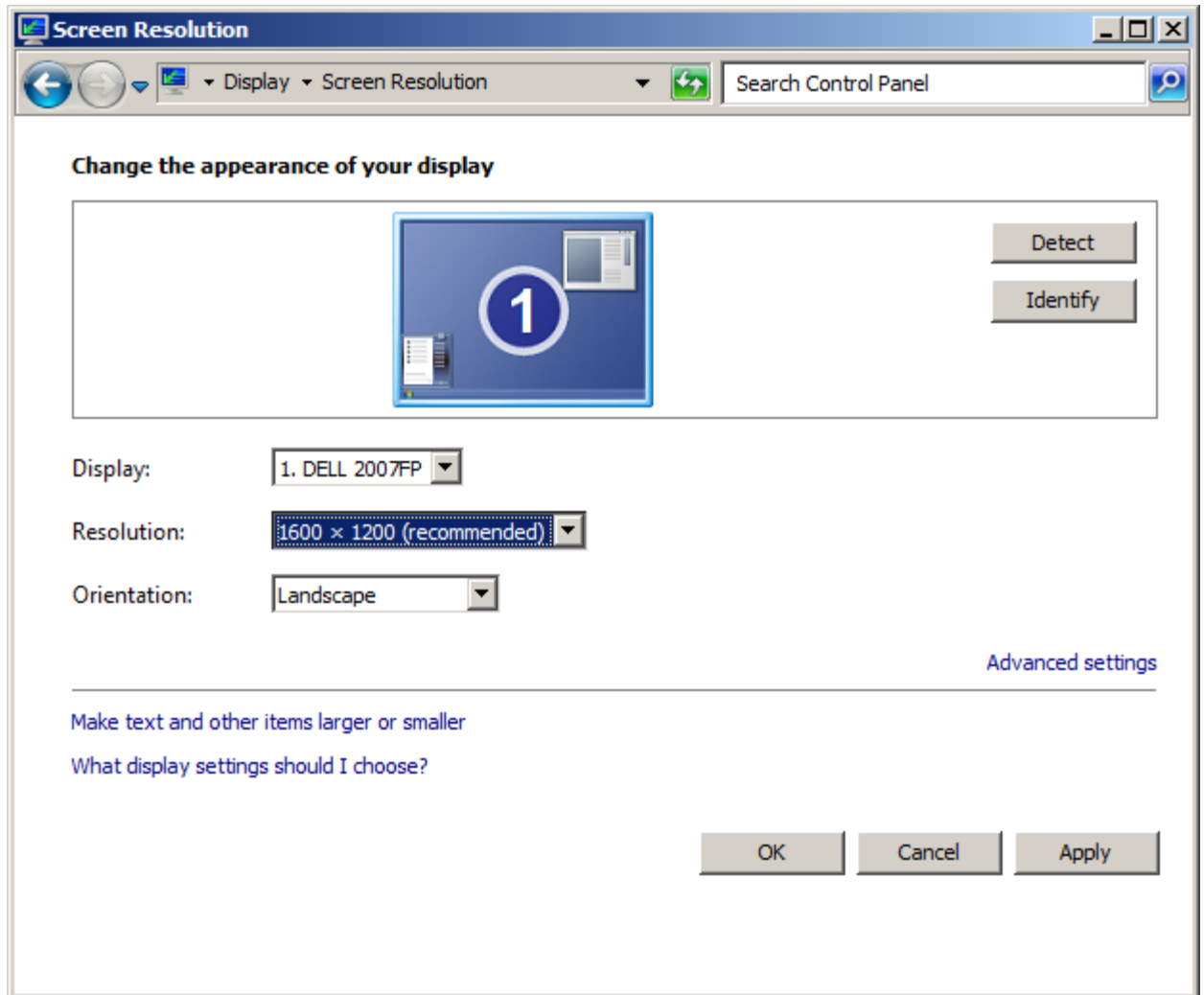
- Now that we have selected Show hidden files, folders, and drives, we can add Notepad, and Register Object to SendTo directory
  - Copy Notepad.exe and Regsvr32.exe from C:\windows\system32
  - Paste both files in this directory  
C:\Users\yourusername\AppData\Roaming\Microsoft\Windows\SendTo
- Note: The location of the SendTo Directory has changed in Windows 7, it is no longer under Documents and Settings.



- Select the Control Panel \ Appearance and Personalization \ Display

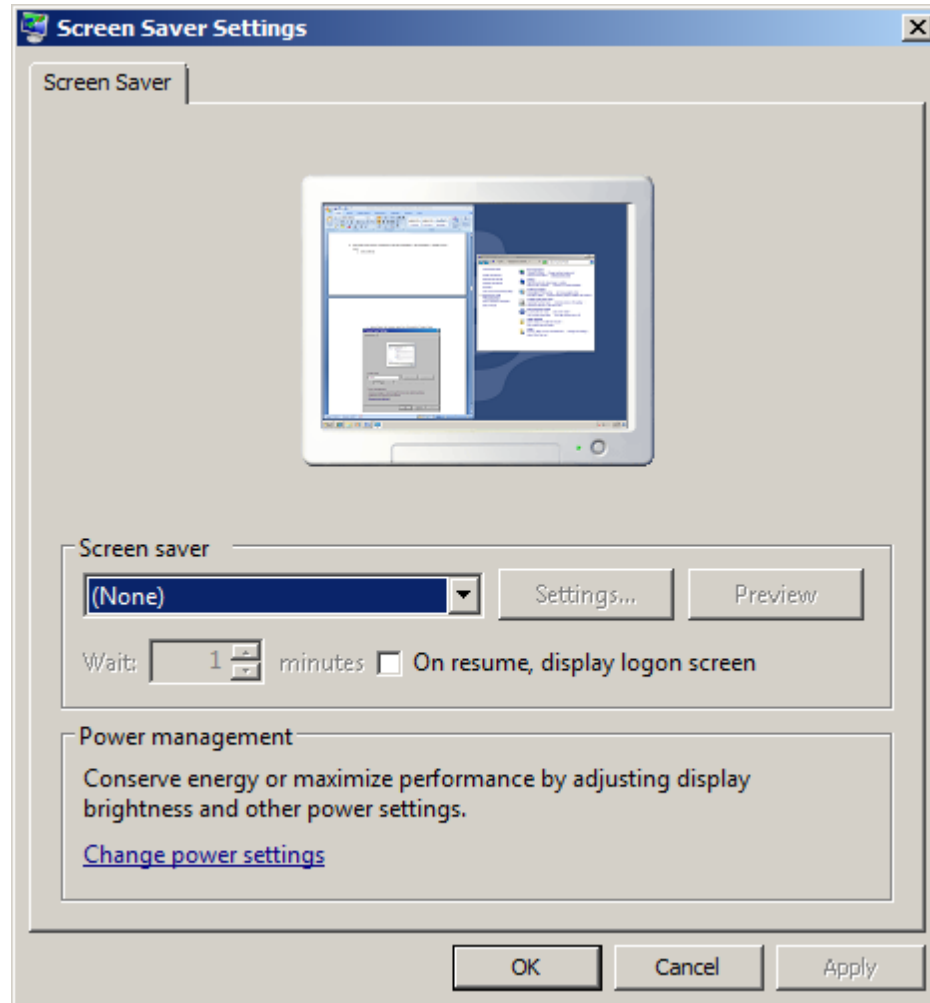


- set the Display to Smaller – 100% (default)
- Select Adjust Resolution on the left side

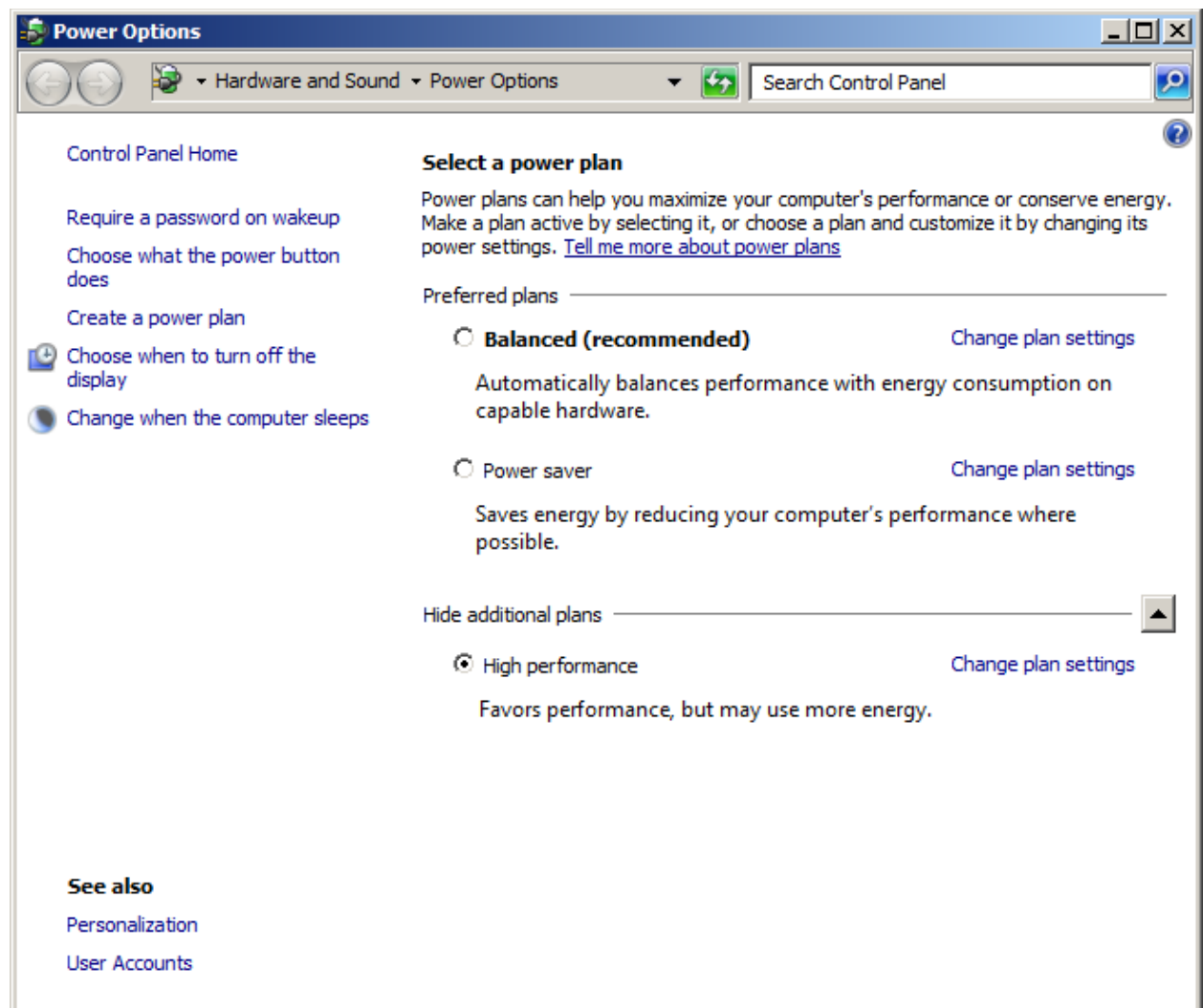


- Set the Resolution to 1280 x 960 or higher
- Click apply and Ok

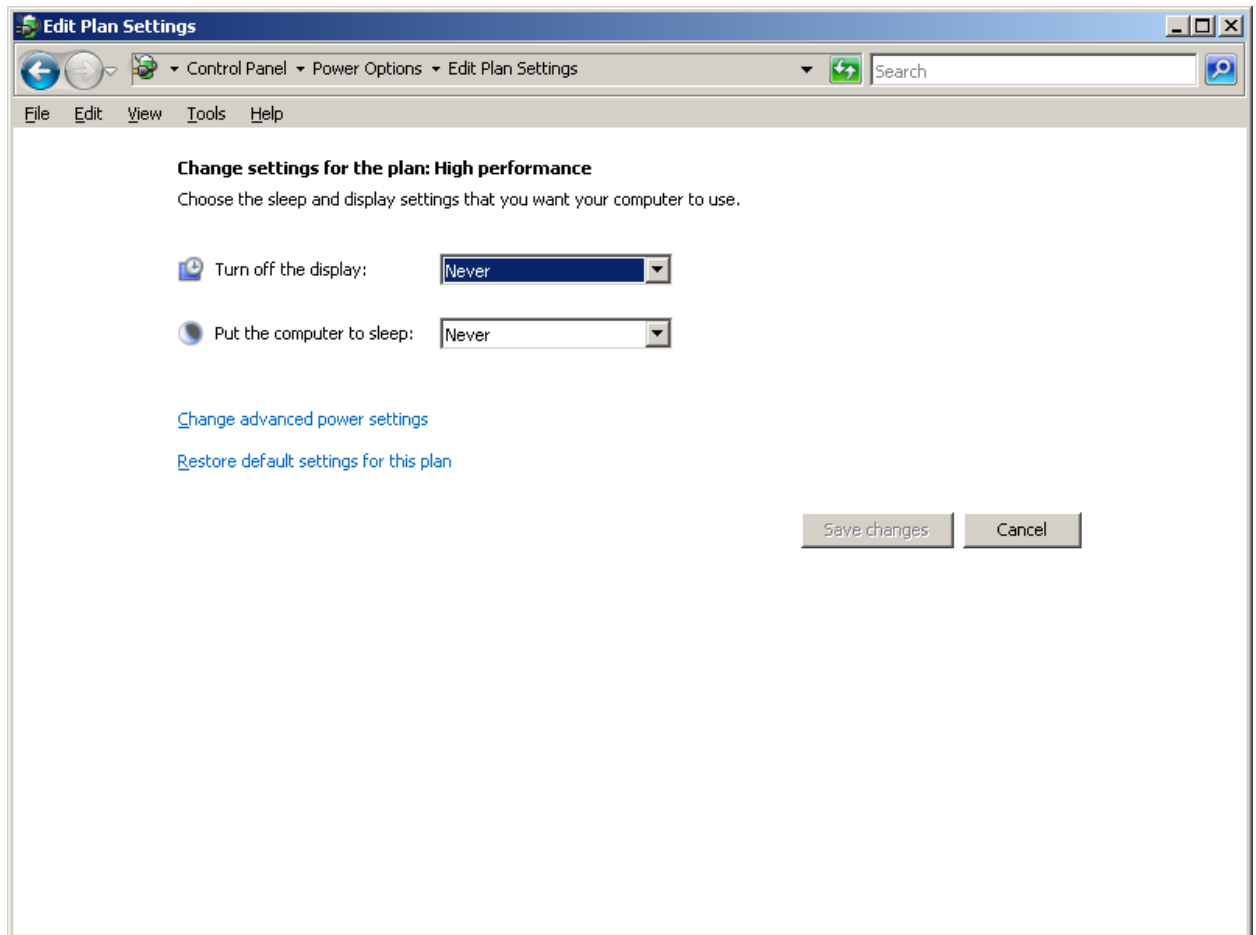
- Select the Control Panel \ Appearance and Personalization \ Personalization \ Change screen saver
  - Select (None)



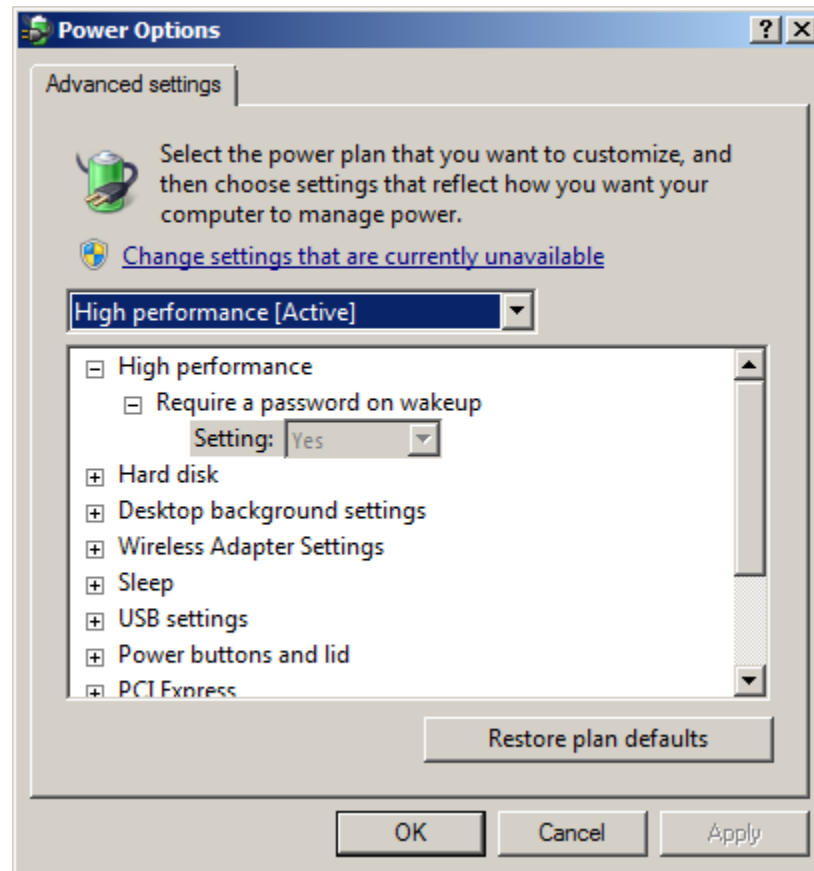
- Under Personalization \ change Screen saver\ Power management, select Change power settings.
  - Click on the arrow to the right of Show additional plans.
  - Then select High performance power plan and click change plan settings.



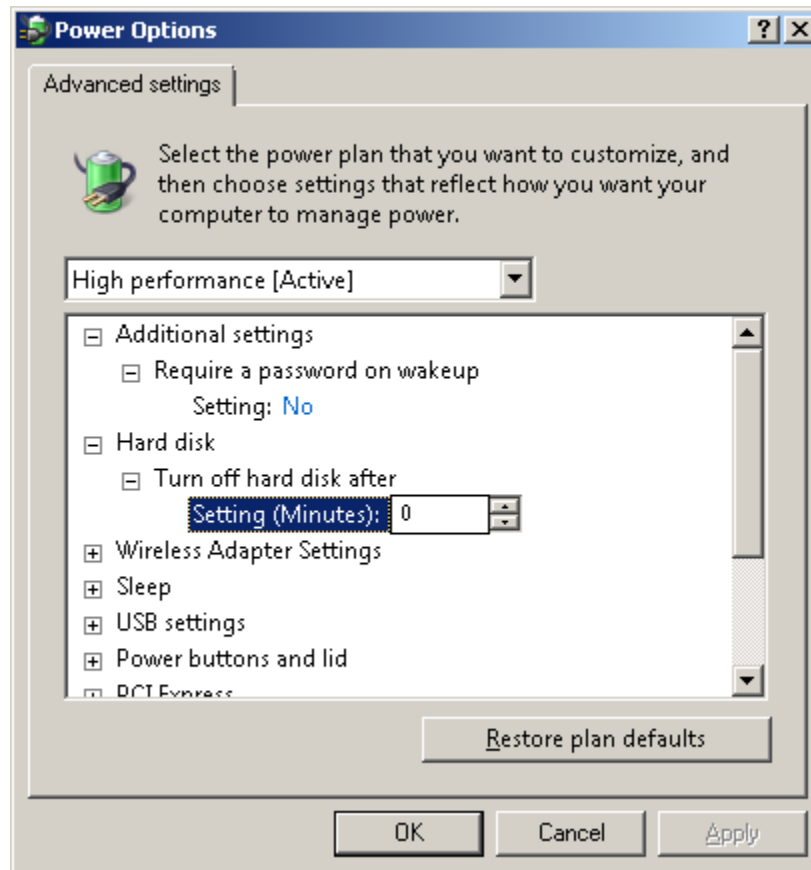
- Select Turn off display/sleep “Never” and then click Change advanced power settings...



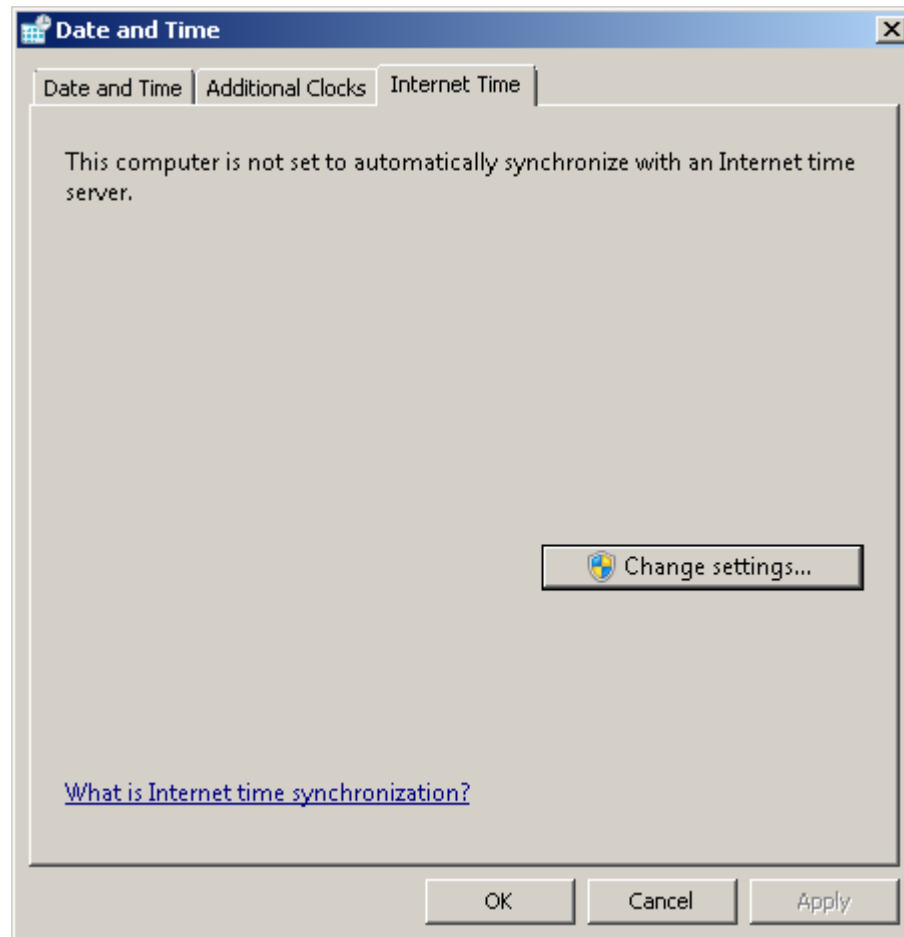
- Click Change settings that are currently unavailable.



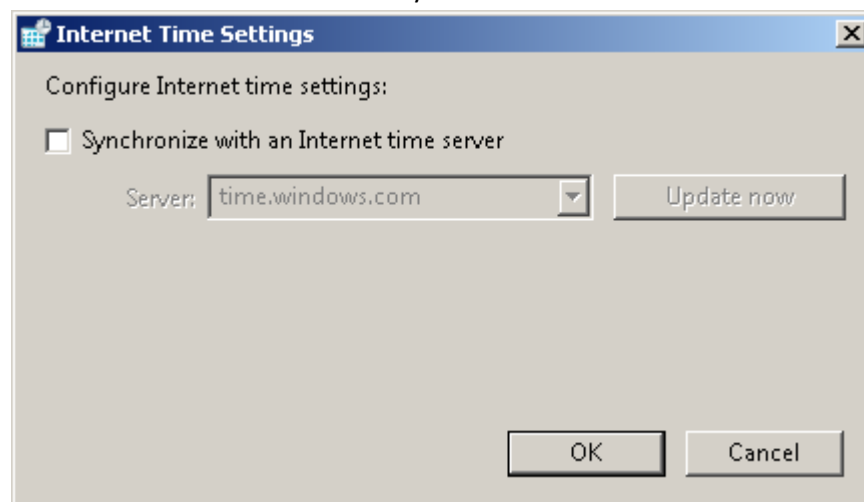
- Change the following settings:
  - Require a password on wakeup \ setting: NO
  - Turn off Hard disk after \ setting: Never
  - Sleep \ Sleep after \ setting: Never
  - Sleep \ Hibernate after \ setting: Never



- Select the Control Panel \ Clock, Language, and Region\ Date and Time
  - Under the Internet Time tab select Change settings..



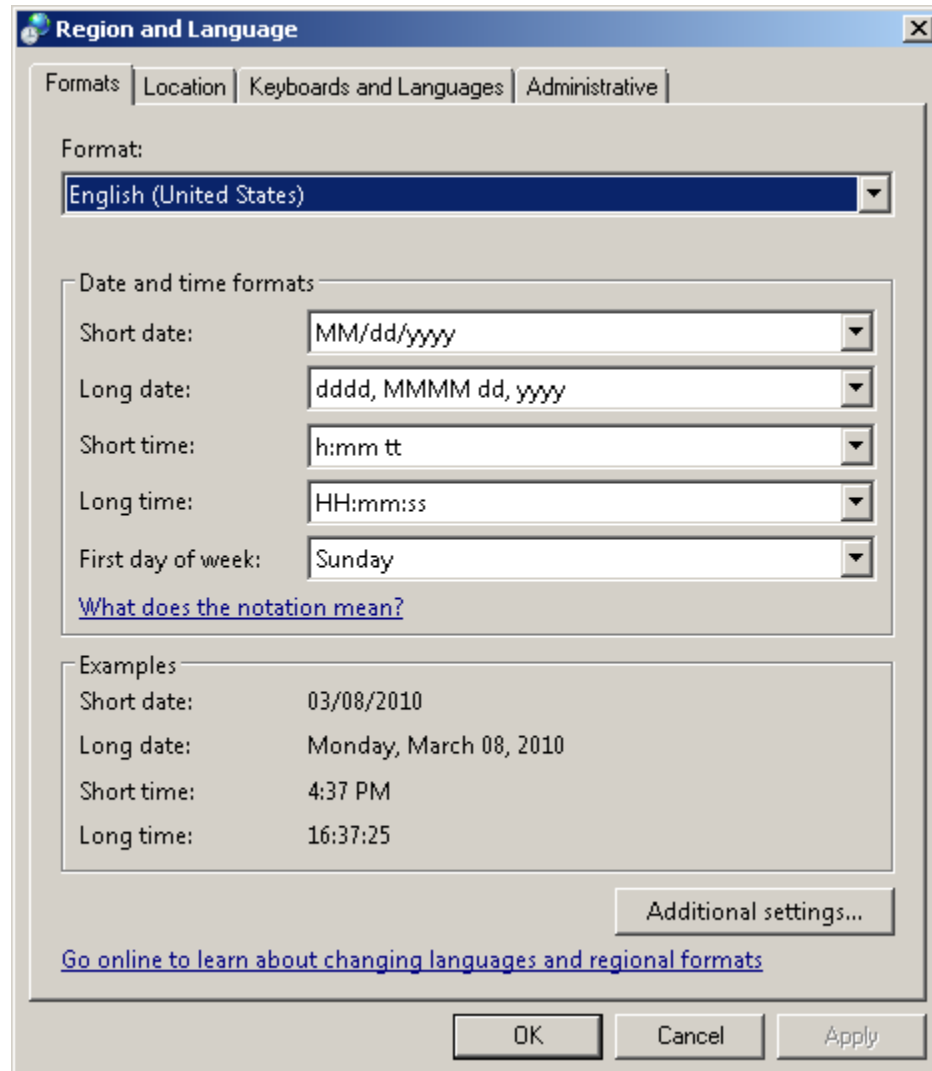
- Remove the check mark next to 'Synchronize with an Internet time server'



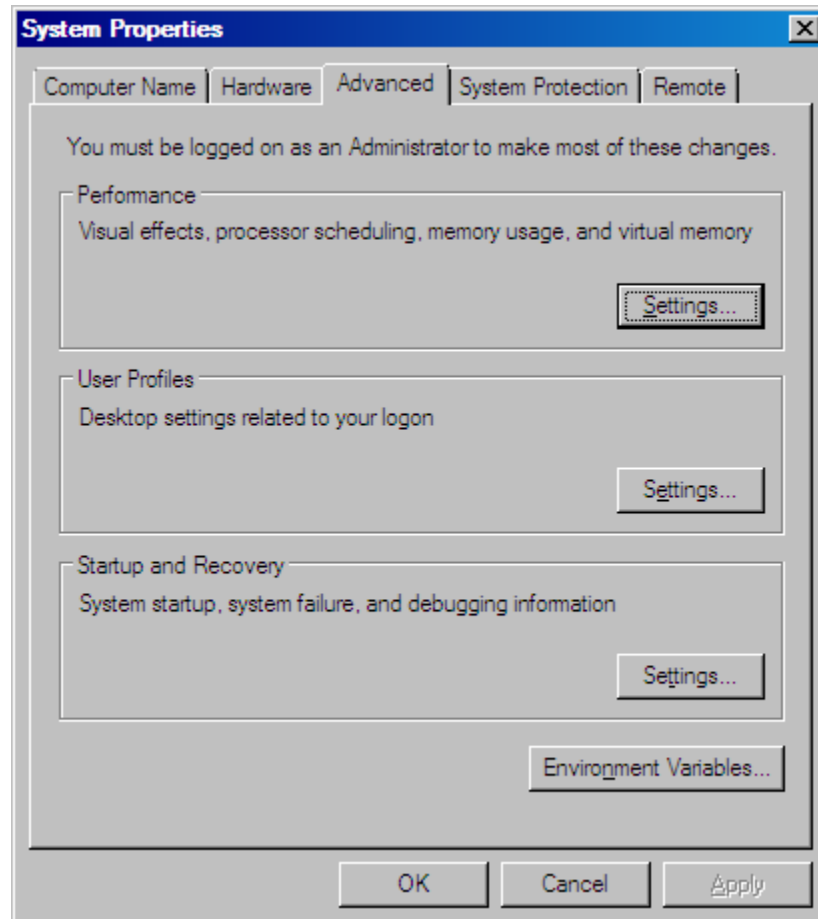
- Click OK



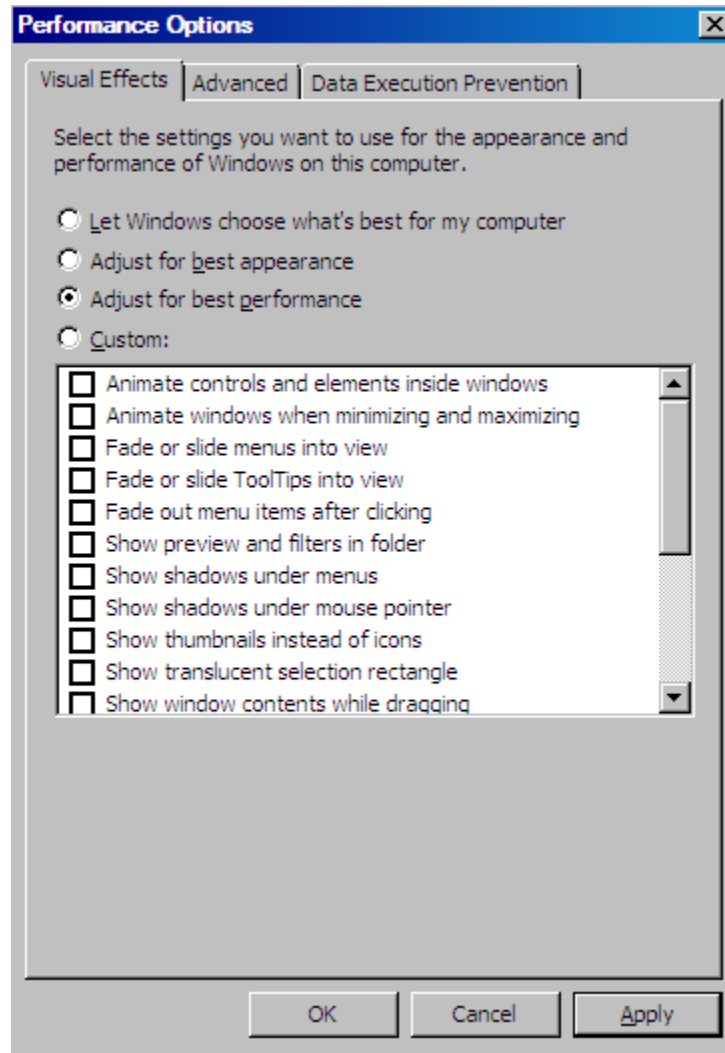
- Select the Control Panel \ Clock, Language, and Region\ Region and Language
  - Set the Short date to MM/dd/yyyy
  - Set the Long time to HH:mm:ss



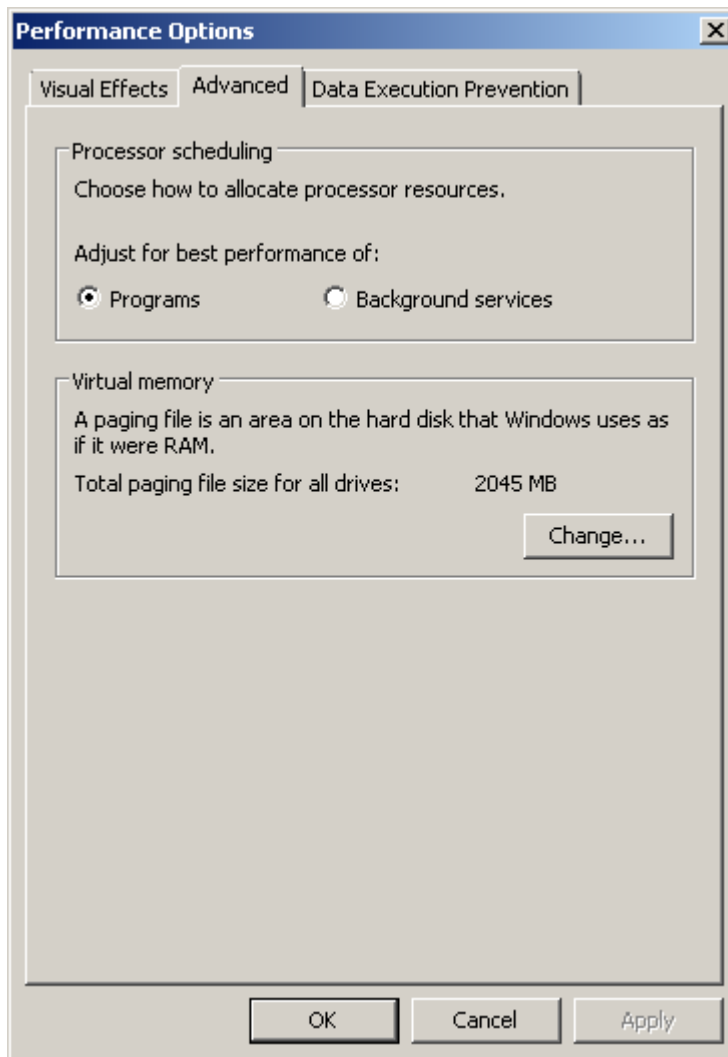
- Under Control Panel \ System and Security \ System
  - select Advanced system settings on the Left
  - Select the Advanced tab then click “Settings” for Performance...



- Select Adjust for best performance and apply

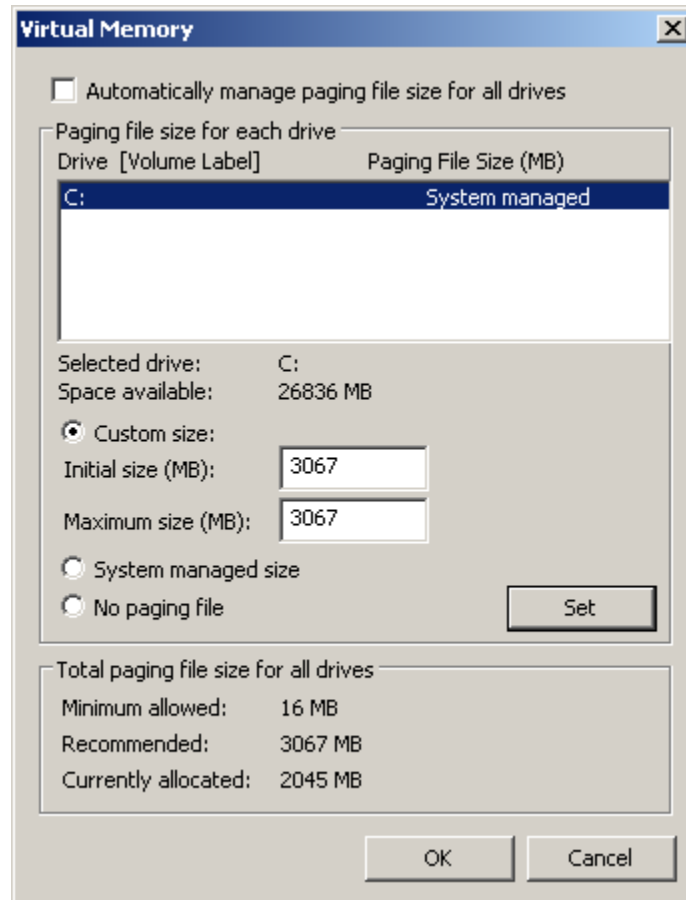


- Select the Advanced Tab on the Performance Options window



- Select the Change button in the Virtual memory section

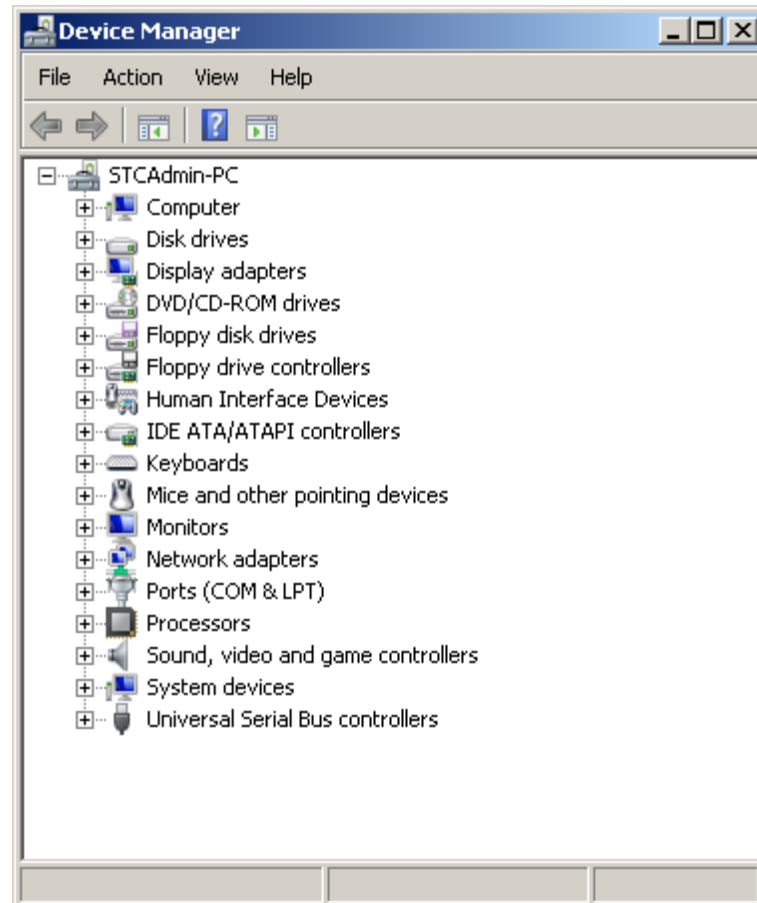
- On the Virtual Memory window remove the check mark next to 'Automatically manage paging file size for all drives'



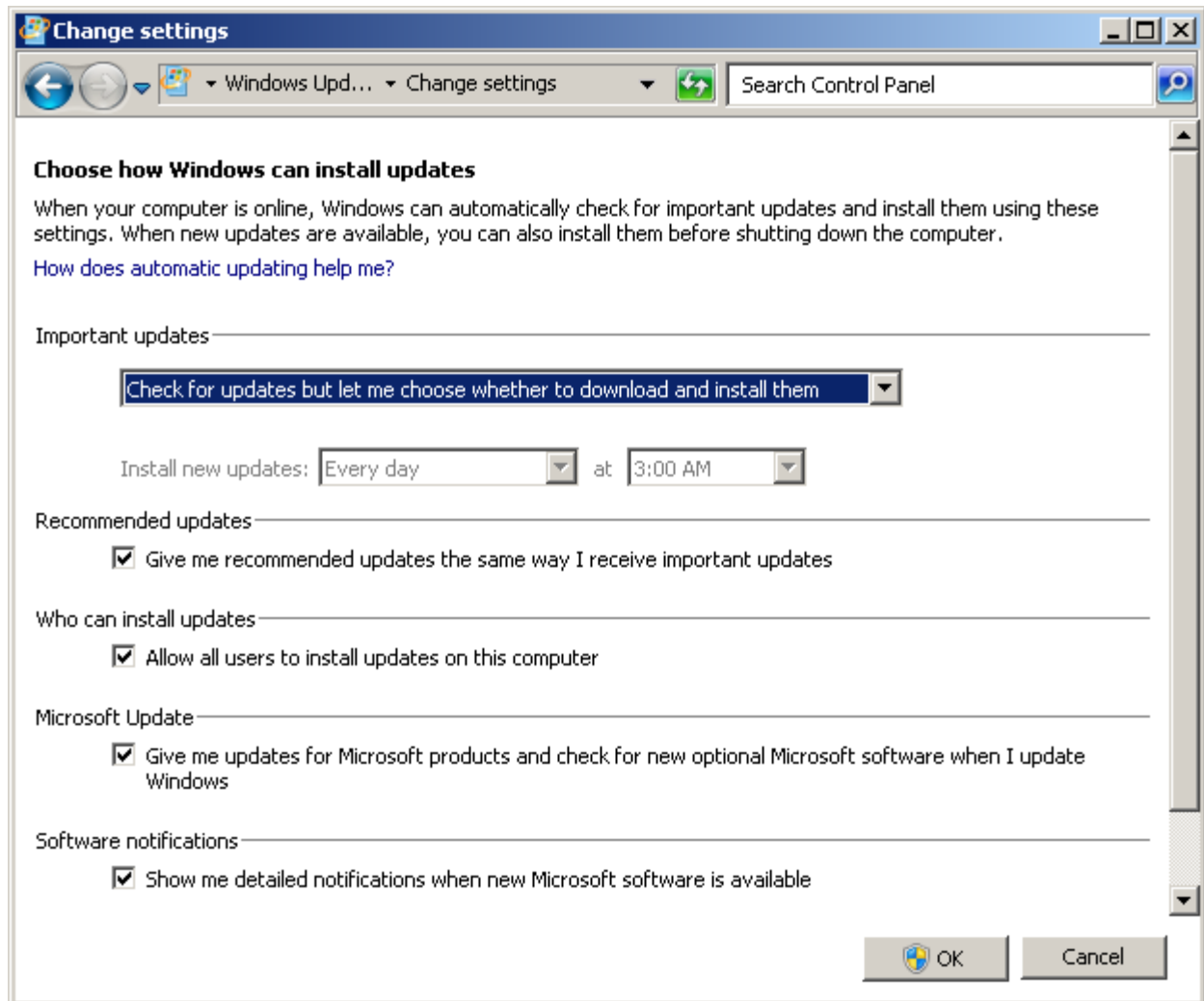
- Select the radio button for Custom size and enter the number listed in the recommended field for both Initial size and Maximum size.
- Select the set button.

Note: the number entered in the Custom size should be 1 and ½ times the amount of physical RAM installed in the machine.

- View the Device Manager and verify there are no device issues (Exclamation next to device tree)

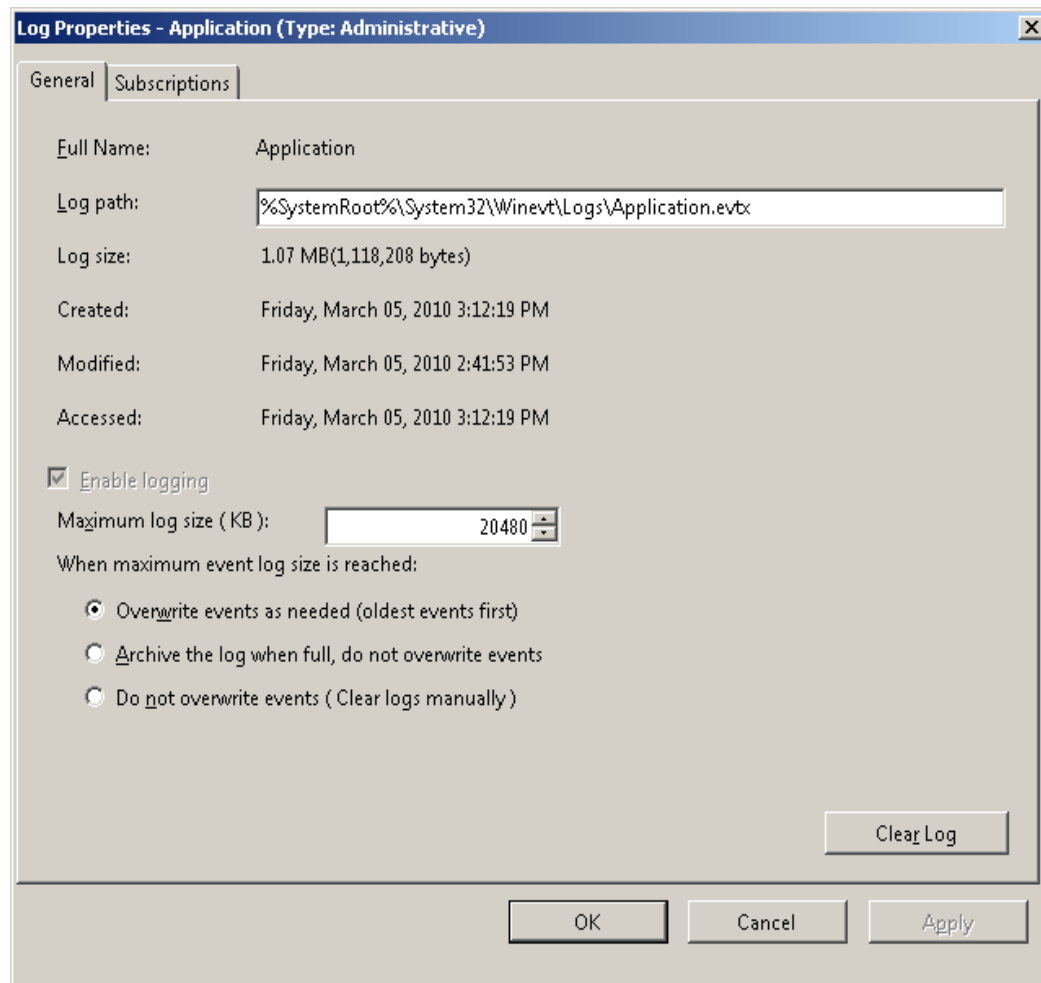


- Next, under Control Panel \ System and Security \ Windows update
  - Click change settings on the left, and select “Check for updates but let me choose whether to download and install them.”
  - Click ok.



- Ensure Windows Logs for Application, Security, and System have “Overwrite events as needed” selected. This can be checked under Control Panel \ System and Security \ Administrative tools \ Event Viewer \ Windows Logs.
  - Right click on the Application, Security, and System icon and select properties.

*Note: “Overwrite events as needed” is on, by default.*

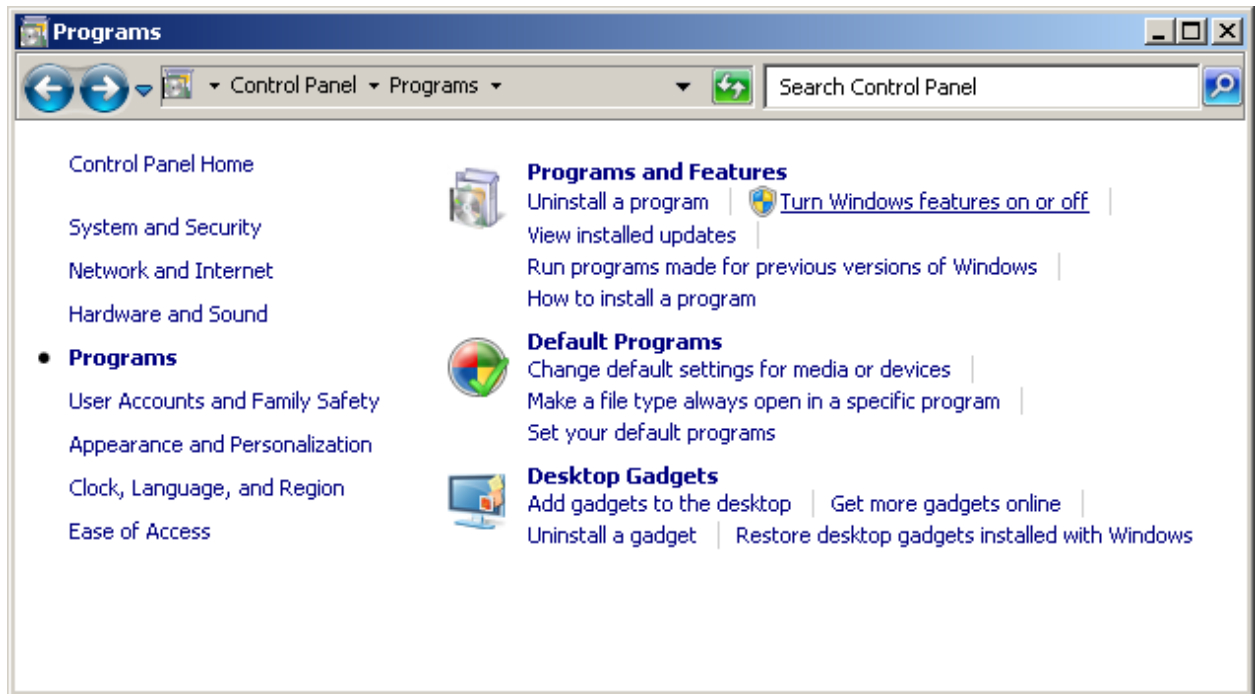




## Installing Required Windows Components from Programs and Features

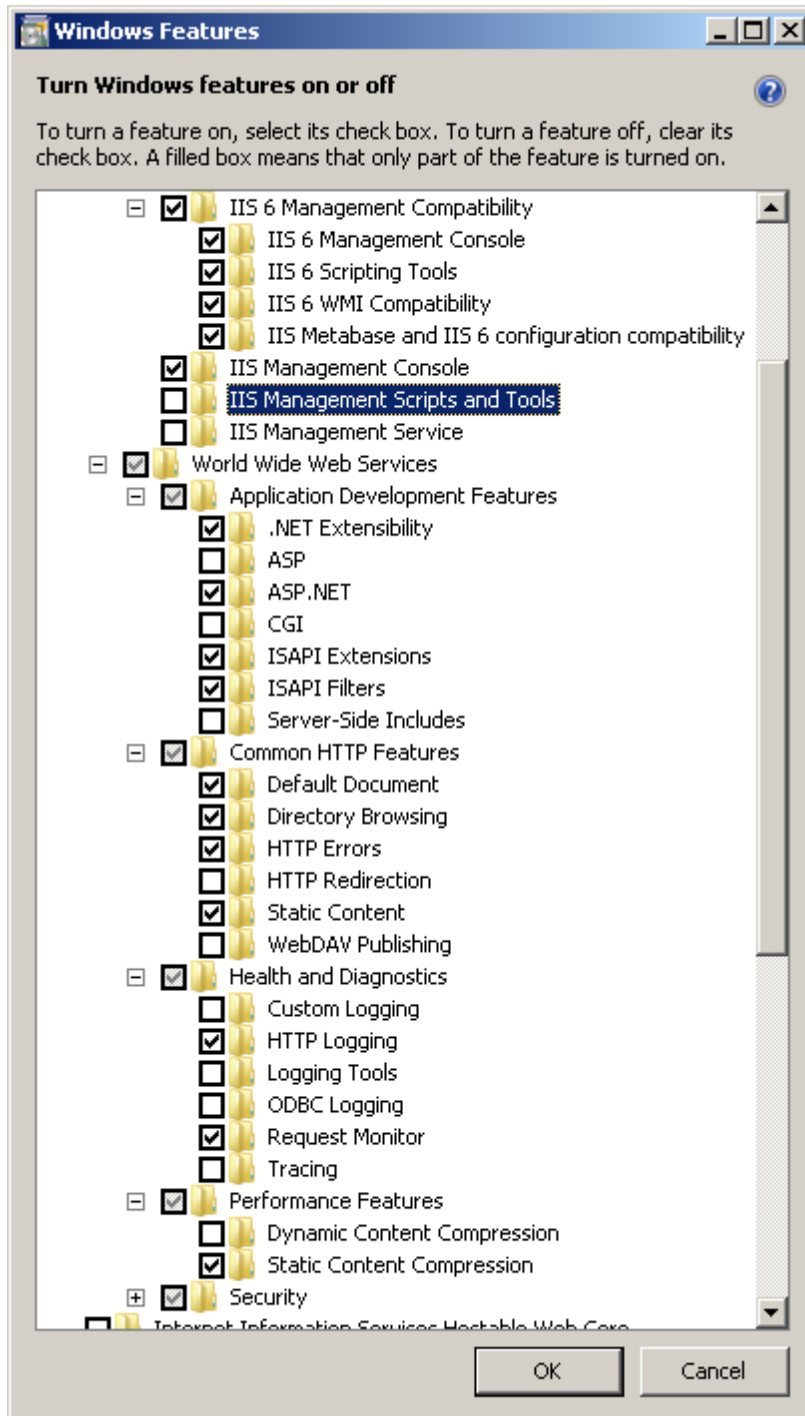
*Note: External media is not required to install these components in Windows 7*

Under Control Panel \ Programs \ Programs and Features, select Turn Windows features on or off



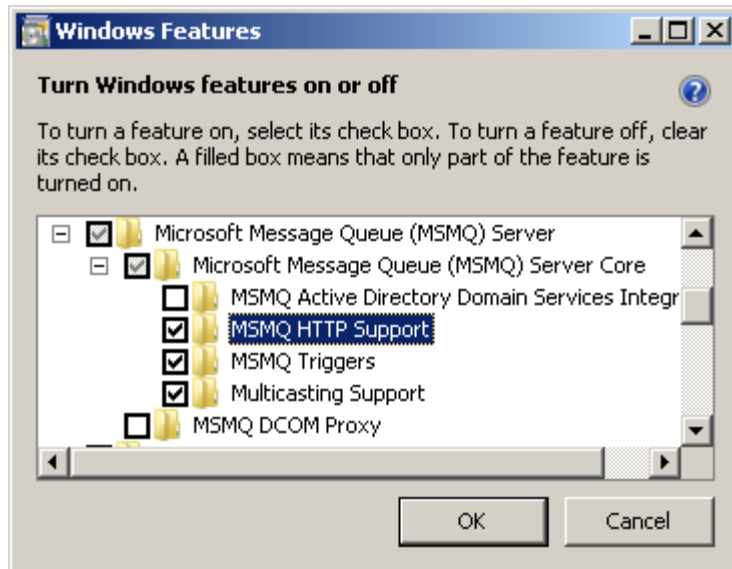
Install the following Windows components and sub components:

- IIS



- Click Ok when all your check boxes look like the image above.
- Installation will take a few minutes.

- MSMQ
  - Select Message Queuing and Expand
    - Select Message Queuing Services and Expand
      - Select Message Queuing Server
      - Message Queuing Triggers
      - HTTP Support
      - Multicasting Support
      - Click Next and wait for installation to complete



- Click Ok when all your check boxes look like the image above.
- Installation will take a few minutes.

Proceed to install Axxess