

REGIONAL. NATIONAL. GLOBAL.

Axess-NOC™

Is a network-based suite of applications providing overall management of large multi-site remote Axess™ systems, deployed either on Regional, National or Global scales. Axess-NOC™ pulls data from all the remote systems connected then aggregates that data for use by the client applications *rOVing™* and *OverSite™* to provide operators and management a centralized view of their network on a real time basis.



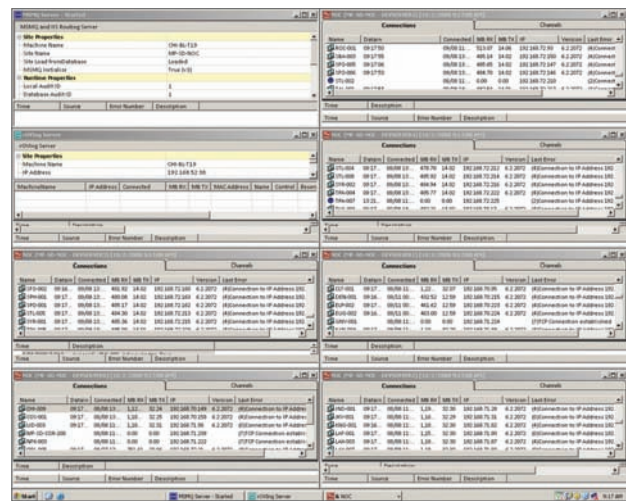
Axess-NOC can be installed in many configurations from a single machine, to a full redundant system giving you scalability to meet or exceed your uptime requirements.

The Power of SQL

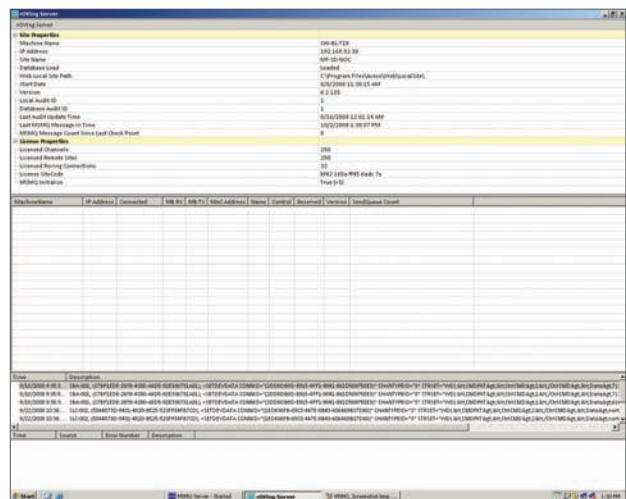
Axess-NOC leverages Microsoft® SQL Server® for system, data warehousing of logs and remote system data. These and other background operations are performed by **Axess-NOC's** sister application **StcBase™**.

Automatic Backup of Remote Sites

StcBase performs background tasks like synchronization of Database settings, for local offsite backups, to remote site Log gathering then used by *rOVing* and *OverSite* clients for reporting purposes.



NOC Servers



Client Connection Manager